

# NSSE Longwood University 2017 and 2014 Item Mean Comparisons

*Onie McKenzie, Assistant Vice President for Student Affairs*

---

**Appearing in the same order and wording as the items on the 2017 and 2014 NSSE, the following tables indicate measured perceptions of...**

- 1) Frequency of classroom behaviors
- 2) Frequency of making academic connections
- 3) Conversations with faculty
- 4) Emphases in coursework
- 5) Behaviors of instructors
- 6) Use of quantitative concepts
- 7) Length of writing assignments
- 8) Discussions with people with differences
- 9) Study habits
- 10) Challenge in coursework
- 11) Student plans prior to graduation
- 12) Community service within courses
- 13) Quality of interactions with people at the institution
- 14) Institutional emphases
- 15) Hours/week spent on outside activities
- 16) Hours/week spent on assigned reading
- 17) Student gain in knowledge, skills, and personal development
- 18) Overall evaluation of educational experience
- 19) Commitment to choosing the same institution over again
- 20) 2017 highest/lowest performing items compared to SE Public
- 21) 2014 highest/lowest performing items compared to SE Public

**Percentages:** The percentages that follow represent a *weighted* percentage of students responding to each question adjusted for the institution's sex and enrollment status.

**Statistical Comparisons:** Items with mean differences that are larger than would be expected by chance are noted with asterisks referring to three significance levels (\* $p < .05$ , \*\* $p < .01$ , \*\*\* $p < .001$ ). Significance levels indicate the probability that an observed difference is due to chance but it does not guarantee that the result is substantive or important. The effect size indicates practical significance.

**Key for the Color Shading:** Green shading notes a comparison to Longwood's favor; red shading indicates a deficit. The magnitude of the effect size is noted by the strength (brilliance) of the shading. The **Darker Green** shading reveals that Longwood's average was significantly higher ( $p < .05$ ) with an effect size at least .3 in magnitude. The **Lighter Green** shading reveals that Longwood's average was significantly higher ( $p < .05$ ) with an effect size less than .3 in magnitude. The **Darker Red** shading reveals that Longwood's average was significantly lower ( $p < .05$ ) with an effect size at least .3 in magnitude. The **Lighter Red** shading reveals that Longwood's average was significantly lower ( $p < .05$ ) with an effect size less than .3 in magnitude.

1. During the current school year, about how often have you done the following?		2017 LU Mean	2017 SE Pub Mean	2014 LU Mean	2014 SE Pub Mean	
a.	Asked questions or contributed to course discussions in other ways	FY	2.8	2.8	2.9	2.8
		SR	3.1	3.1	3.2	3.1**
b.	Prepared two or more drafts of a paper or assignment before turning it in	FY	2.4	2.5	2.3	2.5***
		SR	2.3	2.4**	2.3	2.4***
c.	Come to class without completing readings or assignments	FY	3.1	3.0	3.1	3.0**
		SR	3.0	3.0	3.0	3.0
d.	Attended an art exhibit, play or other arts performance (dance, music, etc.)	FY	2.2	1.9***	2.1	2.0**
		SR	2.0	1.8***	2.1	1.8***
e.	Asked another student to help you understand course material	FY	2.7	2.6*	2.6	2.6
		SR	2.6	2.5*	2.6	2.5*
f.	Explained course material to one or more students	FY	2.7	2.7	2.7	2.7
		SR	2.9	2.8	2.9	2.8*
g.	Prepared for exams by discussing or working through course material with other students	FY	2.7	2.6*	2.7	2.6**
		SR	2.7	2.6***	2.7	2.6**
h.	Worked with other students on course projects or assignments	FY	2.7	2.6	2.7	2.6
		SR	3.0	2.9**	2.9	2.9
i.	Gave a course presentation	FY	2.2	2.2	2.3	2.2**
		SR	3.1	2.7***	3.0	2.6***

2. During the current school year, about how often have you done the following?		2017 LU Mean	2017 SE Pub Mean	2014 LU Mean	2014 SE Pub Mean	
a.	Combined ideas from different courses when completing assignments	FY	2.5	2.5	2.7	2.6
		SR	3.0	2.9*	3.1	3.0*
b.	Connected your learning to societal problems or issues	FY	2.6	2.5	2.6	2.6
		SR	2.8	2.8	2.9	2.8*
c.	Included diverse perspectives (political, religious, racial/ethnic, gender, etc.) in course discussions or assignments	FY	2.5	2.5	2.6	2.6
		SR	2.7	2.5**	2.8	2.6***
d.	Examined the strengths and weaknesses of your own views on a topic or issue	FY	2.8	2.8	2.7	2.8
		SR	2.8	2.8	2.9	2.9

2. During the current school year, about how often have you done the following?		2017 LU Mean	2017 SE Pub Mean	2014 LU Mean	2014 SE Pub Mean
e.	Tried to better understand someone else's views by imagining how an issue looks from his or her perspective	FY	2.9	2.9	2.9
		SR	3.0	3.0	3.0
f.	Learned something that changed the way you understand an issue or concept	FY	2.8	2.8	2.8
		SR	2.9	2.9	3.0
g.	Connected ideas from your courses to your prior experiences and knowledge	FY	3.0	3.0	3.1
		SR	3.2	3.2	3.4

3. During the current school year, about how often have you done the following?		2017 LU Mean	2017 SE Pub Mean	2014 LU Mean	2014 SE Pub Mean
a.	Talked about career plans with a faculty member	FY	2.5	2.3***	2.4
		SR	2.8	2.5***	2.9
b.	Worked with a faculty member on activities other than coursework (committees, student groups, etc.)	FY	1.8	1.8	1.8
		SR	2.4	2.0***	2.4
c.	Discussed course topics, ideas, or concepts with a faculty member outside of class	FY	2.1	2.0	2.1
		SR	2.5	2.2***	2.6
d.	Discussed your academic performance with a faculty member	FY	2.3	2.2*	2.3
		SR	2.5	2.2***	2.6

4. During the current school year, how much has your coursework emphasized the following?		2017 LU Mean	2017 SE Pub Mean	2014 LU Mean	2014 SE Pub Mean
a.	Memorizing course material	FY	3.0	3.0	3.1
		SR	2.8	2.8	2.8
b.	Applying facts, theories, or methods to practical problems or new situations	FY	2.8	2.9*	2.9
		SR	3.0	3.1*	3.2

4. During the current school year, how much has your coursework emphasized the following?			2017 LU Mean	2017 SE Pub Mean	2014 LU Mean	2014 SE Pub Mean
c.	Analyzing an idea, experience, or line of reasoning in depth by examining its parts	FY	2.8	2.9*	3.0	3.0
		SR	3.0	3.0	3.2	3.1
d.	Evaluating a point of view, decision, or information source	FY	2.9	2.9	3.0	2.9
		SR	2.9	2.9	3.1	3.0*
e.	Forming a new idea or understanding from various pieces of information	FY	2.8	2.8	2.9	2.9
		SR	2.9	2.9	3.1	3.0*

5. During the current school year, to what extent have your instructors done the following?			2017 LU Mean	2017 SE Pub Mean	2014 LU Mean	2014 SE Pub Mean
a.	Clearly explained course goals and requirements	FY	3.0	3.1*	3.2	3.1
		SR	3.1	3.2	3.2	3.2
b.	Taught course sessions in an organized way	FY	3.0	3.0	3.1	3.1
		SR	3.2	3.1	3.2	3.2
c.	Used examples or illustrations to explain difficult points	FY	2.9	3.0	3.2	3.1
		SR	3.1	3.1	3.2	3.2
d.	Provided feedback on a draft or work in progress	FY	2.9	2.8	3.0	2.8**
		SR	3.0	2.8***	3.1	2.8***
e.	Provided prompt and detailed feedback on tests or completed assignments	FY	2.7	2.7	2.8	2.8
		SR	2.9	2.8*	3.0	2.9**

6. During the current school year, about how often have you done the following?			2017 LU Mean	2017 SE Pub Mean	2014 LU Mean	2014 SE Pub Mean
a.	Reached conclusions based on your own analysis of numerical information (numbers, graphs, statistics, etc.)	FY	2.4	2.6***	2.5	2.6
		SR	2.6	2.7	2.6	2.7**
b.	Used numerical information to examine a real-world problem or issue (unemployment, climate change, public health, etc.)	FY	2.1	2.3**	2.3	2.3
		SR	2.4	2.4	2.3	2.5**
c.	Evaluated what others have concluded from numerical information	FY	2.1	2.3***	2.3	2.3
		SR	2.4	2.4	2.4	2.5

7. During the current school year, about how many papers, reports, or other writing tasks of the following length have you been assigned? (Include those not yet completed.)		2017 LU Mean	2017 SE Pub Mean	2014 LU Mean	2014 SE Pub Mean
a. Up to 5 pages	FY	6.3	5.9	6.9	5.9***
	SR	8.0	6.7***	7.2	6.5*
b. Between 6 and 10 pages	FY	2.1	2.0	2.1	1.8**
	SR	3.9	3.1**	3.4	3.0*
c. 11 pages or more	FY	.5	.8**	.5	.7*
	SR	2.0	1.8	1.8	1.8

8. During the current school year, about how often have you had discussions with people from the following groups?		2017 LU Mean	2017 SE Pub Mean	2014 LU Mean	2014 SE Pub Mean
a. People of a race or ethnicity other than your own	FY	3.1	3.1	3.1	3.1
	SR	3.1	3.2	3.3	3.2
b. People from an economic background other than your own	FY	3.1	3.1	3.2	3.1*
	SR	3.2	3.1	3.3	3.2*
c. People with religious beliefs other than your own	FY	3.0	3.0	3.1	3.0
	SR	3.1	3.0	3.1	3.1
d. People with political views other than your own	FY	3.2	3.0**	3.2	3.0**
	SR	3.2	3.1***	3.3	3.1**

9. During the current school year, about how often have you done the following?		2017 LU Mean	2017 SE Pub Mean	2014 LU Mean	2014 SE Pub Mean
a. Identified key information from reading assignments	FY	3.0	3.0	3.1	3.2
	SR	3.1	3.1	3.3	3.3
b. Reviewed your notes after class	FY	3.0	2.9	2.9	3.0
	SR	2.9	2.9	2.9	3.0*
c. Summarized what you learned in class or from course materials	FY	2.8	2.8	2.9	2.9
	SR	2.9	2.9	2.8	3.0**

10. During the current school year, to what extent have your courses challenged you to do your best work?		2017 LU Mean	2017 SE Pub Mean	2014 LU Mean	2014 SE Pub Mean
	FY	5.5	5.4	5.5	5.6
	SR	5.5	5.6	5.7	5.7

11. Which of the following have you done or do you plan to do before you graduate? (Indicates the percentage who responded "Done or in progress")		2017 LU %	2017 SE Pub %	2014 LU %	2014 SE Pub %	
a.	Participate in an internship, co-op, field experience, student teaching, or clinical placement	FY	2%	8%***	4%	9%***
		SR	87%	49%***	87%	49%***
b.	Hold a formal leadership role in a student organization or group	FY	8%	11%	12%	12%
		SR	64%	36%***	71%	36%***
c.	Participate in a learning community or some formal program where groups of students take two or more classes together	FY	7%	14%***	12%	16%*
		SR	35%	24%***	40%	25%***
d.	Participate in a study abroad program	FY	3%	3%	2%	4%*
		SR	16%	13%	22%	12%***
e.	Work with a faculty member on a research project	FY	3%	5%	2%	6%**
		SR	34%	25%***	36%	25%***
f.	Complete a culminating senior experience (capstone, Sr project or thesis, comp exam, portfolio, etc.)	FY	1%	2%	1%	3%*
		SR	72%	44%***	72%	44%***

12. About how many of your courses at this institution have included a community-based project (service-learning)?		2017 LU Mean	2017 SE Pub Mean	2014 LU Mean	2014 SE Pub Mean
	FY	1.7	1.6**	1.6	1.6
	SR	1.8	1.7**	1.9	1.7***

<b>13. Indicate the quality of your interactions with the following people at your institution. (1=Poor; 7=Excellent)</b>		<b>2017 LU Mean</b>	<b>2014 SE Pub Mean</b>	<b>2014 LU Mean</b>	<b>2014 SE Pub Mean</b>	
a.	Students	FY	5.6	5.4***	5.8	5.6***
		SR	5.7	5.6	5.9	5.7**
b.	Academic advisors	FY	5.3	5.2	5.5	5.1**
		SR	5.4	5.2*	5.6	5.1***
c.	Faculty	FY	5.5	5.2***	5.5	5.2**
		SR	5.6	5.5	5.9	5.5***
d.	Student services staff (career services, student activities, housing, etc.)	FY	5.2	5.0	5.1	4.9*
		SR	5.0	4.9	5.3	4.9***
e.	Other administrative staff and offices (registrar, financial aid, etc.)	FY	5.1	4.9**	5.0	4.7***
		SR	5.0	4.8*	5.1	4.7***

<b>14. How much does your institution emphasize the following?</b>		<b>2017 LU Mean</b>	<b>2017 SE Pub Mean</b>	<b>2014 LU Mean</b>	<b>2014 SE Pub Mean</b>	
a.	Spending significant amounts of time studying and on academic work	FY	3.1	3.1	3.3	3.2
		SR	3.0	3.2**	3.2	3.2
b.	Providing support to help students succeed academically	FY	3.0	3.1	3.3	3.1***
		SR	3.0	2.9	3.2	3.0***
c.	Using learning support services (tutoring services, writing center, etc.)	FY	3.1	3.1	3.3	3.2*
		SR	2.8	2.9	3.0	2.9*
d.	Encouraging contact among students from different backgrounds (social, racial/ethnic, religious, etc.)	FY	2.8	2.8	2.8	2.7
		SR	2.6	2.6	2.7	2.6
e.	Providing opportunities to be involved socially	FY	3.1	3.0	3.2	3.1***
		SR	3.1	2.9***	3.3	3.0***
f.	Providing support for your overall well-being (recreation, health care, counseling, etc.)	FY	3.0	3.0	3.2	3.1**
		SR	3.0	2.8**	3.2	2.9***
g.	Helping you manage your non-academic responsibilities (work, family, etc.)	FY	2.4	2.4	2.5	2.4
		SR	2.2	2.1*	2.4	2.1***
h.	Attending campus activities and events (performing arts, athletic events, etc.)	FY	2.9	2.9	3.1	3.0
		SR	2.8	2.7	3.0	2.8**

14. How much does your institution emphasize the following?		2017 LU Mean	2017 SE Pub Mean	2014 LU Mean	2014 SE Pub Mean
i. Attending events that address important social, economic , or political issues	FY	2.6	2.6	2.6	2.6
	SR	2.5	2.4*	2.6	2.5

15. About how many hours do you spend in a typical 7-day week doing the following?		2017 LU Mean	2017 SE Pub Mean	2014 LU Mean	2014 SE Pub Mean
a. Preparing for class (studying, reading, writing, homework or lab work, analyzing data, rehearsing, and other academic activities)	FY	13.7	14.1	13.2	13.6
	SR	13.0	14.9***	12.1	14.5***
b. Participating in co-curricular activities (organizations, campus publications, st government, Greek life, intercollegiate or intramural sports, etc.)	FY	5.8	5.7	6.2	5.3**
	SR	7.8	5.0***	7.5	4.7***
c. Working for pay <b>on campus</b>	FY	.8	2.0***	1.0	2.0***
	SR	3.1	3.4	3.3	3.3
d. Working for pay <b>off campus</b>	FY	2.2	5.8***	1.4	5.1***
	SR	4.8	12.5***	4.3	11.9***
e. Doing community service or volunteer work	FY	2.1	2.7*	2.3	2.5
	SR	2.6	3.4***	3.3	3.3
f. Relaxing and socializing (time with friends, video games, TV or videos, socializing online, etc.)	FY	12.4	12.5	13.9	12.9*
	SR	11.3	10.7	12.2	10.9**
g. Providing care for dependents (children, parents, etc.)	FY	.8	2.6***	.8	2.6***
	SR	1.2	5.8***	1.5	6.2***
h. Commuting to campus (driving, walking, etc.)	FY	1.4	4.5***	2.3	4.1***
	SR	3.9	5.5***	3.7	5.2***

16. Of the time you spend preparing for class in a typical 7-day week, about how much is on assigned reading?		2017 LU Mean	2017 SE Pub Mean	2014 LU Mean	2014 SE Pub Mean
	FY	3.1	2.6***	3.1	2.7***
	SR	2.7	2.7	2.8	2.8



17. How much has your experience at this institution contributed to your knowledge, skills, and personal development in the following areas?		2017 LU Mean	2017 SE Pub Mean	2014 LU Mean	2014 SE Pub Mean
a. Writing clearly and effectively	FY	3.0	2.8***	3.0	2.9*
	SR	3.2	3.0**	3.3	3.0***
b. Speaking clearly and effectively	FY	2.8	2.7*	2.7	2.7
	SR	3.1	2.9***	3.3	3.0***
c. Thinking critically and analytically	FY	3.1	3.1	3.1	3.1
	SR	3.4	3.3**	3.4	3.3*
d. Analyzing numerical and statistical information	FY	2.5	2.7**	2.5	2.7**
	SR	2.7	2.9***	2.6	2.9***
e. Acquiring job- or work-related knowledge and skills	FY	2.7	2.6*	2.7	2.6
	SR	3.2	2.9***	3.2	3.0***
f. Working effectively with others	FY	3.0	2.8***	2.9	2.8**
	SR	3.3	3.1***	3.3	3.1***
g. Developing or clarifying a personal code of values and ethics	FY	2.8	2.7**	2.9	2.7***
	SR	3.0	2.8***	3.0	2.8***
h. Understanding people of other backgrounds (economic, racial/ethnic, political, religious, nationality, etc.)	FY	2.9	2.8	2.7	2.7
	SR	2.9	2.8	2.9	2.8
i. Solving complex real-world problems	FY	2.8	2.6	2.6	2.6
	SR	2.8	2.8	2.9	2.8
j. Being an informed and active citizen	FY	2.9	2.7***	2.7	2.6
	SR	2.9	2.7***	3.1	2.7***

18. How would you evaluate your entire educational experience at this institution?		2017 LU Mean	2017 SE Pub Mean	2014 LU Mean	2014 SE Pub Mean
	FY	3.3	3.2	3.3	3.2**
	SR	3.3	3.3	3.5	3.3***

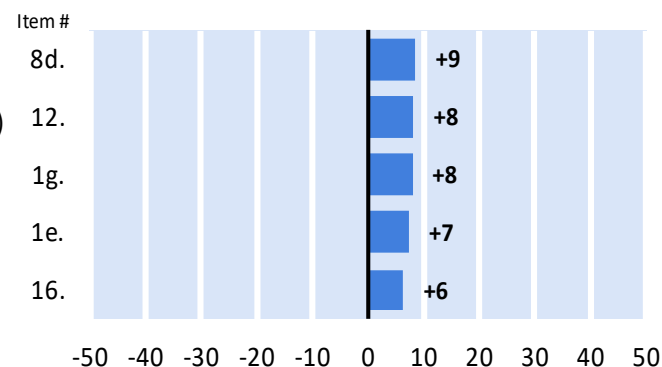
19. If you could start over again, would you go to the <i>same institution</i> you are now attending?		2017 LU Mean	2017 SE Pub Mean	2014 LU Mean	2014 SE Pub Mean
FY		3.3	3.2*	3.3	3.3
SR		3.3	3.3	3.4	3.3**

**20. 2017 NSSE Longwood’s Highest and Lowest Performing Items compared to the Southeast Public Comparison Group – First Year Students and Seniors\*:**

**First-year Students**

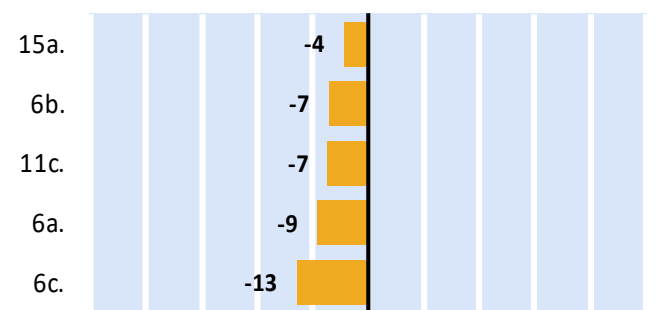
**Highest Performing Relative to Southeast Public**

- Discussions with... People with political views other than your own (DD)
- About how many courses have included a community-based project (service-learning)? (HIP)
- Prepared for exams by discussing or working through course material w/other students (CL)
- Asked another student to help you understand course material (CL)
- Spent more than 10 hours per week on assigned reading



**Lowest Performing Relative to Southeast Public**

- Spent more than 15 hours per week preparing for class
- Used numerical information to examine a real-world problem or issue (QR)
- Participated in a learning community or some other formal program (HIP)
- Reached conclusions based on your own analysis of numerical information (QR)
- Evaluated what others have concluded from numerical information (QR)



Percentage Point Difference with Southeast Public

**Seniors**

**Highest Performing Relative to Southeast Public**

Participated in an internship, co-op, field exp., student teach., clinical placemt. (HIP)

Completed a culminating senior experience (HIP)

Talked about career plans with a faculty member (SF)

Assigned more than 50 pages of writing

Instructors provided feedback on a draft or work in progress (ET)

**Lowest Performing Relative to Southeast Public**

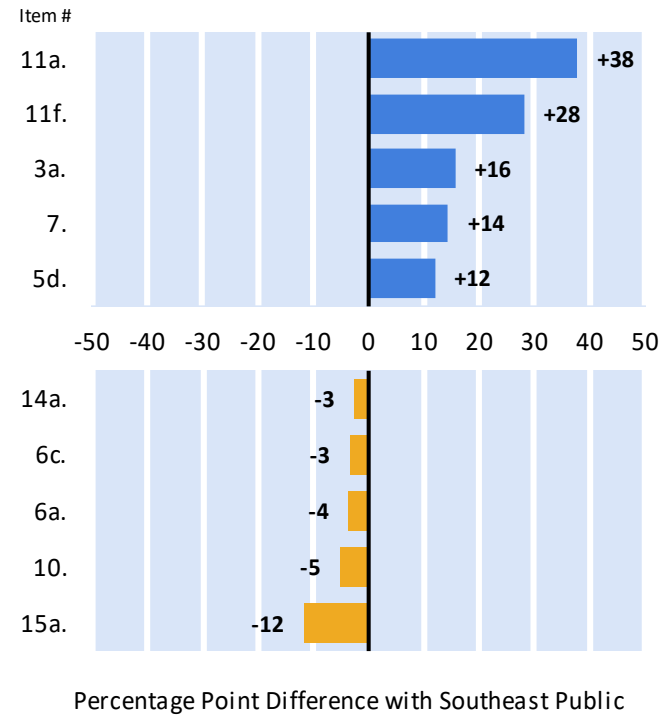
Institution emphasis on studying and academic work

Evaluated what others have concluded from numerical information (QR)

Reached conclusions based on your own analysis of numerical information (QR)

Extent to which courses challenged you to do your best work

Spent more than 15 hours per week preparing for class



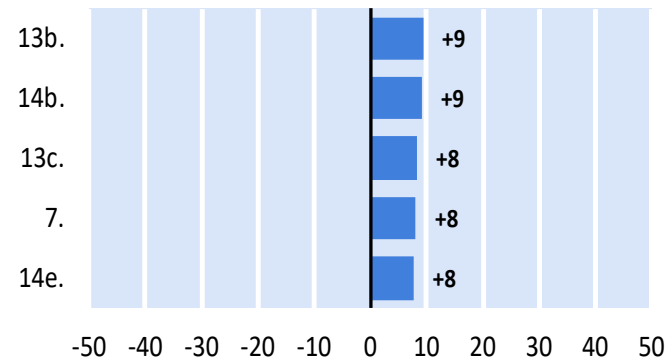
\*The graphics used to illustrate Longwood’s highest and lowest performing individual items in 2017 were taken directly from page 3 of the NSSE 2017 Snapshot.

**21. 2014 NSSE Longwood's Highest and Lowest Performing Items compared to the Southeast Public Comparison Group – First Year Students and Seniors\*\*:**

**First-year Students**

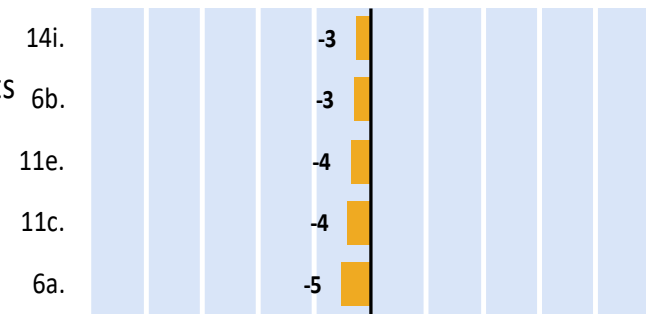
**Highest Performing Relative to Southeast Public**

- Quality of interactions with academic advisors
- Institution emphasis on providing support to succeed academically
- Quality of interactions with faculty
- Assigned more than 50 pages of writing
- Institution emphasis on providing opportunities to be involved socially



**Lowest Performing Relative to Southeast Public**

- Institution emphasis on attending important social/econ/polit issues events
- Used numerical information to examine a real-world problem or issue
- Worked with a faculty member on a research project
- Participated in a learning community or some formal program where...
- Reached conclusions based on your own analysis of numerical information



% Point Difference with Southeast Public

## Senior Students

### Highest Performing Relative to Southeast Public

Participated in an internship, field exp, student teach, clinical placement

Completed a culminating senior experience

Talked about career plans with a faculty member

Number courses included a community-based project (service-learning)

Instructors provided feedback on a draft or work in progress

### Lowest Performing Relative to Southeast Public

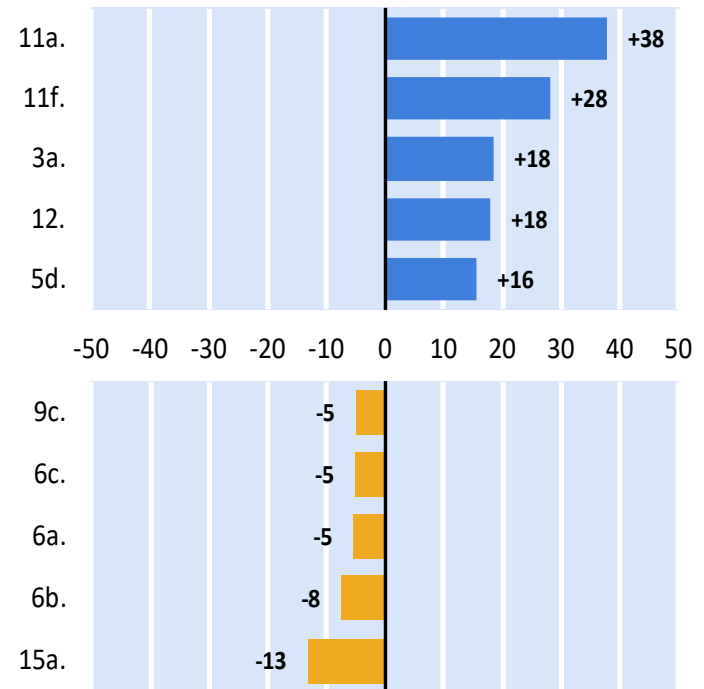
Summarized what you learned in class or from course materials

Evaluated what others have concluded from numerical information

Reached conclusions based on your own analysis of numerical information

Used numerical information to examine a real-world problem or issue

Spent more than 15 hours per week preparing for class



% Point Difference with Southeast Public

\*\*The graphics used to illustrate Longwood's highest and lowest performing individual items in 2014 were taken directly from page 3 of the NSSE 2014 Snapshot.