

NSSE Longwood and Southeast Public Item Statistical Comparisons over Time (based on the 2020, 2017, and 2014 NSSE responses)

Onie McKenzie, Assistant Vice President for Student Affairs

The following tables illustrate mean comparisons on each item from the 2020 (n=634), 2017 (n=666), and 2014 (n=812) NSSE Longwood and Southeast Public respondents on the following...

- 1) Frequency of classroom behaviors
- 2) Frequency of making academic connections
- 3) Conversations with faculty
- 4) Emphases within coursework
- 5) Behaviors of instructors
- 6) Use of quantitative concepts
- 7) Length of writing assignments
- 8) Discussions with people with differences
- 9) Study habits
- 10) Challenge in coursework
- 11) Student plans prior to graduation
- 12) Community service within courses
- 13) Quality of interactions with people at the institution
- 14) Institutional emphases
- 15) Institutional climate
- 16) Hours/week spent on outside activities
- 17) Hours/week spent on assigned reading
- 18) Student gain in knowledge, skills, and personal development
- 19) Overall evaluation of educational experience
- 20) Commitment to choosing the same institution over again
- 21) Commitment to returning to the same institution next year
- 22) 2020 NSSE Longwood's Highest and Lowest Performing Items
- 23) 2017 NSSE Longwood's Highest and Lowest Performing Items
- 24) 2014 NSSE Longwood's Highest and Lowest Performing Items

Mean Comparisons:

The following mean comparisons report both statistical significance and effect size. Items with mean differences that are larger than expected by chance are noted with asterisks referring to three significance levels (* $p < .05$, ** $p < .01$, *** $p < .001$). The effect size noted with open or filled, upward or downward pointing triangles, indicates practical significance.

Key for the Symbols:

▲ Upward pointing triangles indicate a comparison in Longwood's favor. The filled-in, upward pointing triangles indicate that Longwood's average was significantly higher ($p < .05$) with an effect size at least .3 in magnitude.

△ The open, upward pointing triangles indicate that Longwood's average was significantly higher ($p < .05$) with an effect size less than .3 in magnitude.

▽ Downward pointing triangles indicate a comparison NOT in Longwood's favor. The open, downward pointing triangles indicate that Longwood's average was significantly lower ($p < .05$) with an effect size less than .3 in magnitude.

▼ The filled-in, downward pointing triangles indicate that Longwood's average was significantly lower ($p < .05$) with an effect size at least .3 in magnitude.

1. During the current school year, about how often have you done the following?		2020 LU Mean	2020 SE Pub Mean	2017 LU Mean	2017 SE Pub Mean	2014 LU Mean	2014 SE Pub Mean	
a.	Asked questions or contributed to course discussions in other ways	FY	3.1	2.7***▲	2.8	2.8	2.9	2.8
		SR	3.2	3.0**△	3.1	3.1	3.2	3.1**△
b.	Come to class without completing readings or assignments	FY	3.1	3.0*△	3.1	3.0	3.1	3.0**△
		SR	3.0	3.0	3.0	3.0	3.0	3.0
c.	Attended an art exhibit, play or other arts performance (dance, music, etc.)	FY	2.0	1.9*△	2.2	1.9***▲	2.1	2.0**△
		SR	1.8	1.7	2.0	1.8***△	2.1	1.8***△
d.	Asked another student to help you understand course material	FY	2.7	2.6*△	2.7	2.6*△	2.6	2.6
		SR	2.6	2.5	2.6	2.5*△	2.6	2.5*△
e.	Explained course material to one or more students	FY	2.8	2.7	2.7	2.7	2.7	2.7
		SR	3.0	2.8***△	2.9	2.8	2.9	2.8*△
f.	Prepared for exams by discussing or working through course material with other students	FY	2.6	2.6	2.7	2.6*△	2.7	2.6**△
		SR	2.8	2.6***△	2.7	2.6***△	2.7	2.6**△
g.	Worked with other students on course projects or assignments	FY	2.9	2.7***▲	2.7	2.6	2.7	2.6
		SR	3.1	2.9***△	3.0	2.9**△	2.9	2.9
h.	Gave a course presentation	FY	2.9	2.2***▲	2.2	2.2	2.3	2.2**△
		SR	3.3	2.7***▲	3.1	2.7***▲	3.0	2.6***▲

2. During the current school year, about how often have you done the following?		2020 LU Mean	2020 SE Pub Mean	2017 LU Mean	2017 SE Pub Mean	2014 LU Mean	2014 SE Pub Mean	
a.	Combined ideas from different courses when completing assignments	FY	2.8	2.5***△	2.5	2.5	2.7	2.6
		SR	3.1	2.9***△	3.0	2.9*△	3.1	3.0*△
b.	Connected your learning to societal problems or issues	FY	2.7	2.5***△	2.6	2.5	2.6	2.6
		SR	2.9	2.7**△	2.8	2.8	2.9	2.8*△
c.	Included diverse perspectives (political, religious, racial/ethnic, gender, etc.) in course discussions or assignments	FY	2.6	2.5	2.5	2.5	2.6	2.6
		SR	2.7	2.6**△	2.7	2.5**△	2.8	2.6***△
d.	Examined the strengths and weaknesses of your own views on a topic or issue	FY	2.9	2.8*△	2.8	2.8	2.7	2.8
		SR	2.9	2.8	2.8	2.8	2.9	2.9
e.	Tried to better understand someone else's views by imagining how an issue looks from his or her perspective	FY	3.0	2.9*△	2.9	2.9	2.9	2.9
		SR	3.1	3.0	3.0	3.0	3.0	3.0

2. During the current school year, about how often have you done the following?		2020 LU Mean	2020 SE Pub Mean	2017 LU Mean	2017 SE Pub Mean	2014 LU Mean	2014 SE Pub Mean	
f.	Learned something that changed the way you understand an issue or concept	FY	2.9	2.8	2.8	2.8	2.8	
		SR	3.0	3.0	2.9	2.9	3.0	2.9
g.	Connected ideas from your courses to your prior experiences and knowledge	FY	3.0	3.0	3.0	3.0	3.1	3.0*Δ
		SR	3.2	3.2	3.2	3.2	3.4	3.2***Δ

3. During the current school year, about how often have you done the following?		2020 LU Mean	2020 SE Pub Mean	2017 LU Mean	2017 SE Pub Mean	2014 LU Mean	2014 SE Pub Mean	
a.	Talked about career plans with a faculty member	FY	2.6	2.4***Δ	2.5	2.3***Δ	2.4	2.2***Δ
		SR	2.9	2.5***▲	2.8	2.5***▲	2.9	2.5***▲
b.	Worked with a faculty member on activities other than coursework (committees, student groups, etc.)	FY	2.0	1.8***Δ	1.8	1.8	1.8	1.7
		SR	2.5	2.0***▲	2.4	2.0***▲	2.4	2.0***▲
c.	Discussed course topics, ideas, or concepts with a faculty member outside of class	FY	2.3	2.0***Δ	2.1	2.0	2.1	2.0***Δ
		SR	2.6	2.2***▲	2.5	2.2***▲	2.6	2.2***▲
d.	Discussed your academic performance with a faculty member	FY	2.4	2.2***Δ	2.3	2.2*Δ	2.3	2.1***Δ
		SR	2.6	2.3***▲	2.5	2.2***Δ	2.6	2.3***▲

4. During the current school year, how much has your coursework emphasized the following?		2020 LU Mean	2020 SE Pub Mean	2017 LU Mean	2017 SE Pub Mean	2014 LU Mean	2014 SE Pub Mean	
a.	Memorizing course material	FY	3.0	3.0	3.0	3.0	3.1	3.0
		SR	2.9	2.8*Δ	2.8	2.8	2.8	2.8
b.	Applying facts, theories, or methods to practical problems or new situations	FY	2.9	2.9	2.8	2.9*∇	2.9	3.0
		SR	3.1	3.1	3.0	3.1*∇	3.2	3.2
c.	Analyzing an idea, experience, or line of reasoning in depth by examining its parts	FY	2.9	2.9	2.8	2.9*∇	3.0	3.0
		SR	3.0	3.0	3.0	3.0	3.2	3.1
d.	Evaluating a point of view, decision, or information source	FY	3.0	2.9*Δ	2.9	2.9	3.0	2.9
		SR	3.2	2.9***Δ	2.9	2.9	3.1	3.0*Δ
e.	Forming a new idea or understanding from various pieces of information	FY	3.0	2.9*Δ	2.8	2.8	2.9	2.9
		SR	3.0	3.0	2.9	2.9	3.1	3.0*Δ

5. During the current school year, to what extent have your instructors done the following?		2020 LU Mean	2020 SE Pub Mean	2017 LU Mean	2017 SE Pub Mean	2014 LU Mean	2014 SE Pub Mean
a. Clearly explained course goals and requirements	FY	3.1	3.0	3.0	3.1*∇	3.2	3.1
	SR	3.1	3.1	3.1	3.2	3.2	3.2
b. Taught course sessions in an organized way	FY	3.0	3.0	3.0	3.0	3.1	3.1
	SR	3.1	3.1	3.2	3.1	3.2	3.2
c. Used examples or illustrations to explain difficult points	FY	3.1	3.0	2.9	3.0	3.2	3.1
	SR	3.1	3.1	3.1	3.1	3.2	3.2
d. Provided feedback on a draft or work in progress	FY	3.1	2.8***▲	2.9	2.8	3.0	2.8**△
	SR	3.2	2.8***▲	3.0	2.8***△	3.1	2.8***▲
e. Provided prompt and detailed feedback on tests or completed assignments	FY	2.9	2.7***△	2.7	2.7	2.8	2.8
	SR	3.0	2.8*△	2.9	2.8*△	3.0	2.9**△

6. During the current school year, about how often have you done the following?		2020 LU Mean	2020 SE Pub Mean	2017 LU Mean	2017 SE Pub Mean	2014 LU Mean	2014 SE Pub Mean
a. Reached conclusions based on your own analysis of numerical information (numbers, graphs, statistics, etc.)	FY	2.5	2.6***∇	2.4	2.6***∇	2.5	2.6
	SR	2.7	2.7	2.6	2.7	2.6	2.7**∇
b. Used numerical information to examine a real-world problem or issue (unemployment, climate change, public health, etc.)	FY	2.4	2.3	2.1	2.3**∇	2.3	2.3
	SR	2.5	2.5	2.4	2.4	2.3	2.5**∇
c. Evaluated what others have concluded from numerical information	FY	2.4	2.4	2.1	2.3***∇	2.3	2.3
	SR	2.5	2.5	2.4	2.4	2.4	2.5

7. During the current school year, about how many papers, reports, or other writing tasks of the following length have you been assigned?		2020 LU Mean	2020 SE Pub Mean	2017 LU Mean	2017 SE Pub Mean	2014 LU Mean	2014 SE Pub Mean
a. Up to 5 pages	FY	6.9	5.9**△	6.3	5.9	6.9	5.9***△
	SR	8.0	6.9*△	8.0	6.7***△	7.2	6.5*△
b. Between 6 and 10 pages	FY	2.3	2.0	2.1	2.0	2.1	1.8**△
	SR	3.7	3.3	3.9	3.1**△	3.4	3.0*△
c. 11 pages or more	FY	0.8	0.9	.5	.8**∇	.5	.7*∇
	SR	1.8	1.9	2.0	1.8	1.8	1.8

8. During the current school year, about how often have you had discussions with people from the following groups?		2020 LU Mean	2020 SE Pub Mean	2017 LU Mean	2017 SE Pub Mean	2014 LU Mean	2014 SE Pub Mean
a.	People of a race or ethnicity other than your own	FY 3.1	3.1	3.1	3.1	3.1	3.1
		SR 3.2	3.2	3.1	3.2	3.3	3.2
b.	People from an economic background other than your own	FY 3.1	3.1	3.1	3.1	3.2	3.1* Δ
		SR 3.2	3.1	3.2	3.1	3.3	3.2* Δ
c.	People with religious beliefs other than your own	FY 3.0	3.0	3.0	3.0	3.1	3.0
		SR 3.0	3.1	3.1	3.0	3.1	3.1
d.	People with political views other than your own	FY 3.1	3.0* Δ	3.2	3.0** Δ	3.2	3.0** Δ
		SR 3.1	3.0	3.2	3.1*** Δ	3.3	3.1** Δ

9. During the current school year, about how often have you done the following?		2020 LU Mean	2020 SE Pub Mean	2017 LU Mean	2017 SE Pub Mean	2014 LU Mean	2014 SE Pub Mean
a.	Identified key information from reading assignments	FY 3.1	3.0	3.0	3.0	3.1	3.2
		SR 3.1	3.1	3.1	3.1	3.3	3.3
b.	Reviewed your notes after class	FY 3.1	3.0** Δ	3.0	2.9	2.9	3.0
		SR 3.0	2.9	2.9	2.9	2.9	3.0* ∇
c.	Summarized what you learned in class or from course materials	FY 2.9	2.9	2.8	2.8	2.9	2.9
		SR 2.9	2.9	2.9	2.9	2.8	3.0** ∇

10. During the current school year, to what extent have your courses challenged you to do your best work?		2020 LU Mean	2020 SE Pub Mean	2017 LU Mean	2017 SE Pub Mean	2014 LU Mean	2014 SE Pub Mean
		FY 5.7	5.4*** Δ	5.5	5.4	5.5	5.6
		SR 5.6	5.5	5.5	5.6	5.7	5.7

11. Which of the following have you done or do you plan to do before you graduate? (Indicates the percentage who responded "Done or in progress")		2020 LU %	2020 SE Pub %	2017 LU %	2017 SE Pub %	2014 LU %	2014 SE Pub %	
a.	Participate in an internship, co-op, field experience, student teaching, or clinical placement	FY	4%	7%*∇	2%	8%***∇	4%	9%***∇
		SR	85%	49%***▲	87%	49%***▲	87%	49%***▲
b.	Hold a formal leadership role in a student organization or group	FY	11%	11%	8%	11%	12%	12%
		SR	67%	35%***▲	64%	36%***▲	71%	36%***▲
c.	Participate in a learning community or some formal program where groups of students take two or more classes together	FY	12%	14%	7%	14%***∇	12%	16%*∇
		SR	39%	24%***▲	35%	24%***△	40%	25%***▲
d.	Participate in a study abroad program	FY	3%	3%	3%	3%	2%	4%*∇
		SR	21%	14%**△	16%	13%	22%	12%***△
e.	Work with a faculty member on a research project	FY	3%	5%	3%	5%	2%	6%**∇
		SR	33%	25%**△	34%	25%***△	36%	25%***△
f.	Complete a culminating senior experience (capstone, Sr project or thesis, comp exam, portfolio, etc.)	FY	2%	2%	1%	2%	1%	3%*∇
		SR	77%	44%***▲	72%	44%***▲	72%	44%***▲

12. About how many of your courses at this institution have included a community-based project (service-learning)?		2020 LU Mean	2020 SE Pub Mean	2017 LU Mean	2017 SE Pub Mean	2014 LU Mean	2014 SE Pub Mean	
		FY	1.8	1.6***▲	1.7	1.6**△	1.6	1.6
		SR	1.9	1.7***△	1.8	1.7**△	1.9	1.7***▲

13. Indicate the quality of your interactions with the following people at your institution. (1=Poor; 7=Excellent)		2020 LU Mean	2020 SE Pub Mean	2017 LU Mean	2014 SE Pub Mean	2014 LU Mean	2014 SE Pub Mean	
a.	Students	FY	5.7	5.4***△	5.6	5.4***△	5.8	5.6***△
		SR	5.6	5.6	5.7	5.6	5.9	5.7**△
b.	Academic advisors	FY	5.6	5.4	5.3	5.2	5.5	5.1***△
		SR	5.5	5.2**△	5.4	5.2*△	5.6	5.1***△

13. Indicate the quality of your interactions with the following people at your institution. (1=Poor; 7=Excellent)		2020 LU Mean	2020 SE Pub Mean	2017 LU Mean	2014 SE Pub Mean	2014 LU Mean	2014 SE Pub Mean	
c.	Faculty	FY	5.7	5.4*** Δ	5.5	5.2*** Δ	5.5	5.2*** Δ
		SR	5.7	5.5	5.6	5.5	5.9	5.5*** Δ
d.	Student services staff (career services, student activities, housing, etc.)	FY	5.5	5.2*** Δ	5.2	5.0	5.1	4.9* Δ
		SR	5.0	5.0	5.0	4.9	5.3	4.9*** Δ
e.	Other administrative staff and offices (registrar, financial aid, etc.)	FY	5.6	5.1*** \blacktriangle	5.1	4.9** Δ	5.0	4.7*** Δ
		SR	5.0	4.9	5.0	4.8* Δ	5.1	4.7*** Δ

14. How much does your institution emphasize the following?		2020 LU Mean	2020 SE Pub Mean	2017 LU Mean	2017 SE Pub Mean	2014 LU Mean	2014 SE Pub Mean	
a.	Spending significant amounts of time studying and on academic work	FY	3.2	3.1** Δ	3.1	3.1	3.3	3.2
		SR	3.1	3.1	3.0	3.2** ∇	3.2	3.2
b.	Providing support to help students succeed academically	FY	3.1	3.0	3.0	3.1	3.3	3.1*** Δ
		SR	3.0	2.9* Δ	3.0	2.9	3.2	3.0*** Δ
c.	Using learning support services (tutoring services, writing center, etc.)	FY	3.2	3.1	3.1	3.1	3.3	3.2* Δ
		SR	3.0	2.9* Δ	2.8	2.9	3.0	2.9* Δ
d.	Encouraging contact among students from different backgrounds (social, racial/ethnic, religious, etc.)	FY	2.8	2.8	2.8	2.8	2.8	2.7
		SR	2.6	2.7	2.6	2.6	2.7	2.6
e.	Providing opportunities to be involved socially	FY	3.2	3.0** Δ	3.1	3.0	3.2	3.1*** Δ
		SR	3.0	2.9* Δ	3.1	2.9*** Δ	3.3	3.0*** \blacktriangle
f.	Providing support for your overall well-being (recreation, health care, counseling, etc.)	FY	3.0	3.0	3.0	3.0	3.2	3.1** Δ
		SR	2.8	2.8	3.0	2.8** Δ	3.2	2.9*** \blacktriangle
g.	Helping you manage your non-academic responsibilities (work, family, etc.)	FY	2.5	2.4	2.4	2.4	2.5	2.4
		SR	2.1	2.1	2.2	2.1* Δ	2.4	2.1*** Δ
h.	Attending campus activities and events (performing arts, athletic events, etc.)	FY	3.0	2.9	2.9	2.9	3.1	3.0
		SR	2.8	2.7	2.8	2.7	3.0	2.8** Δ
i.	Attending events that address important social, economic, or political issues	FY	2.5	2.5	2.6	2.6	2.6	2.6
		SR	2.4	2.4	2.5	2.4* Δ	2.6	2.5

15. To what extent do you agree or disagree with the following statements?		2020 LU Mean	2020 SE Pub Mean	2017 LU Mean	2017 SE Pub Mean	2014 LU Mean	2014 SE Pub Mean
a. I feel comfortable being myself at this institution.	FY	3.3	3.3	n/a	n/a	n/a	n/a
	SR	3.3	3.3	n/a	n/a	n/a	n/a
b. I feel valued by this institution.	FY	3.1	3.0***Δ	n/a	n/a	n/a	n/a
	SR	3.0	2.9	n/a	n/a	n/a	n/a
c. I feel like part of the community at this institution.	FY	3.2	3.0**Δ	n/a	n/a	n/a	n/a
	SR	3.1	3.0	n/a	n/a	n/a	n/a

16. About how many hours do you spend in a typical 7-day week doing the following?		2020 LU Mean	2020 SE Pub Mean	2017 LU Mean	2017 SE Pub Mean	2014 LU Mean	2014 SE Pub Mean
a. Preparing for class (studying, reading, writing, homework or lab work, analyzing data, rehearsing, and other academic activities)	FY	13.6	14.0	13.7	14.1	13.2	13.6
	SR	12.5	14.7***▽	13.0	14.9***▽	12.1	14.5***▽
b. Participating in co-curricular activities (organizations, campus publications, st government, Greek life, intercollegiate or intramural sports, etc.)	FY	6.3	5.7	5.8	5.7	6.2	5.3**Δ
	SR	8.1	5.2***▲	7.8	5.0***▲	7.5	4.7***▲
c. Working for pay on campus	FY	1.6	2.2*▽	.8	2.0***▽	1.0	2.0***▽
	SR	3.6	3.6	3.1	3.4	3.3	3.3
d. Working for pay off campus	FY	1.9	5.4***▼	2.2	5.8***▼	1.4	5.1***▼
	SR	5.5	12.4***▼	4.8	12.5***▼	4.3	11.9***▼
e. Doing community service or volunteer work	FY	2.5	2.7	2.1	2.7*▽	2.3	2.5
	SR	3.7	3.5	2.6	3.4***▽	3.3	3.3
f. Relaxing and socializing (time with friends, video games, TV or videos, socializing online, etc.)	FY	12.2	13.0	12.4	12.5	13.9	12.9*Δ
	SR	11.9	11.4	11.3	10.7	12.2	10.9**Δ
g. Providing care for dependents (children, parents, etc.)	FY	1.1	2.4***▽	.8	2.6***▽	.8	2.6***▽
	SR	1.9	5.4***▼	1.2	5.8***▼	1.5	6.2***▼
h. Commuting to campus (driving, walking, etc.)	FY	2.4	4.6***▼	1.4	4.5***▼	2.3	4.1***▼
	SR	4.5	5.7**▽	3.9	5.5***▽	3.7	5.2***▽

17. Of the time you spend preparing for class in a typical week, about how much is on assigned reading?		2020 LU Mean	2020 SE Pub Mean	2017 LU Mean	2017 SE Pub Mean	2014 LU Mean	2014 SE Pub Mean
	FY	2.9	2.5***▲	3.1	2.6***▲	3.1	2.7***▲
	SR	2.8	2.7*Δ	2.7	2.7	2.8	2.8

18. How much has your experience at this institution contributed to your knowledge, skills, and personal development in the following areas?		2020 LU Mean	2020 SE Pub Mean	2017 LU Mean	2017 SE Pub Mean	2014 LU Mean	2014 SE Pub Mean
a. Writing clearly and effectively	FY	3.0	2.8***Δ	3.0	2.8***Δ	3.0	2.9*Δ
	SR	3.2	3.0***Δ	3.2	3.0**Δ	3.3	3.0***Δ
b. Speaking clearly and effectively	FY	3.0	2.7***▲	2.8	2.7*Δ	2.7	2.7
	SR	3.3	3.0***▲	3.1	2.9***Δ	3.3	3.0***▲
c. Thinking critically and analytically	FY	3.2	3.1**Δ	3.1	3.1	3.1	3.1
	SR	3.4	3.3	3.4	3.3**Δ	3.4	3.3*Δ
d. Analyzing numerical and statistical information	FY	2.6	2.7	2.5	2.7**▽	2.5	2.7**▽
	SR	2.7	3.0***▽	2.7	2.9***▽	2.6	2.9***▽
e. Acquiring job- or work-related knowledge and skills	FY	2.8	2.6**Δ	2.7	2.6*Δ	2.7	2.6
	SR	3.1	3.0	3.2	2.9***Δ	3.2	3.0***Δ
f. Working effectively with others	FY	3.1	2.9***Δ	3.0	2.8***Δ	2.9	2.8**Δ
	SR	3.3	3.1***Δ	3.3	3.1***Δ	3.3	3.1***Δ
g. Developing or clarifying a personal code of values and ethics	FY	2.9	2.7***Δ	2.8	2.7**Δ	2.9	2.7***Δ
	SR	3.1	2.8***Δ	3.0	2.8***Δ	3.0	2.8***Δ
h. Understanding people of other backgrounds (economic, racial/ethnic, political, religious, nationality, etc.)	FY	2.9	2.8*Δ	2.9	2.8	2.7	2.7
	SR	2.9	2.9	2.9	2.8	2.9	2.8
i. Solving complex real-world problems	FY	2.8	2.7**Δ	2.8	2.6	2.6	2.6
	SR	2.8	2.9	2.8	2.8	2.9	2.8
j. Being an informed and active citizen	FY	3.0	2.7***▲	2.9	2.7***Δ	2.7	2.6
	SR	3.0	2.7***Δ	2.9	2.7***Δ	3.1	2.7***▲

19. How would you evaluate your entire educational experience at this institution?		2020 LU Mean	2020 SE Pub Mean	2017 LU Mean	2017 SE Pub Mean	2014 LU Mean	2014 SE Pub Mean
	FY	3.3	3.2** Δ	3.3	3.2	3.3	3.2** Δ
	SR	3.3	3.2	3.3	3.3	3.5	3.3*** Δ

20. If you could start over again, would you go to the same institution you are now attending?		2020 LU Mean	2020 SE Pub Mean	2017 LU Mean	2017 SE Pub Mean	2014 LU Mean	2014 SE Pub Mean
	FY	3.3	3.2	3.3	3.2* Δ	3.3	3.3
	SR	3.2	3.3	3.3	3.3	3.4	3.3** Δ

21. Do you intend to return to this institution next year?		2020 LU Mean	2020 SE Pub Mean	2017 LU Mean	2017 SE Pub Mean	2014 LU Mean	2014 SE Pub Mean
	FY	90%	88%	n/a	n/a	n/a	n/a
	SR	n/a	n/a	n/a	n/a	n/a	n/a

22. 2020 NSSE Longwood's Highest and Lowest Performing Items relative to the Southeast Public Comparison Group:

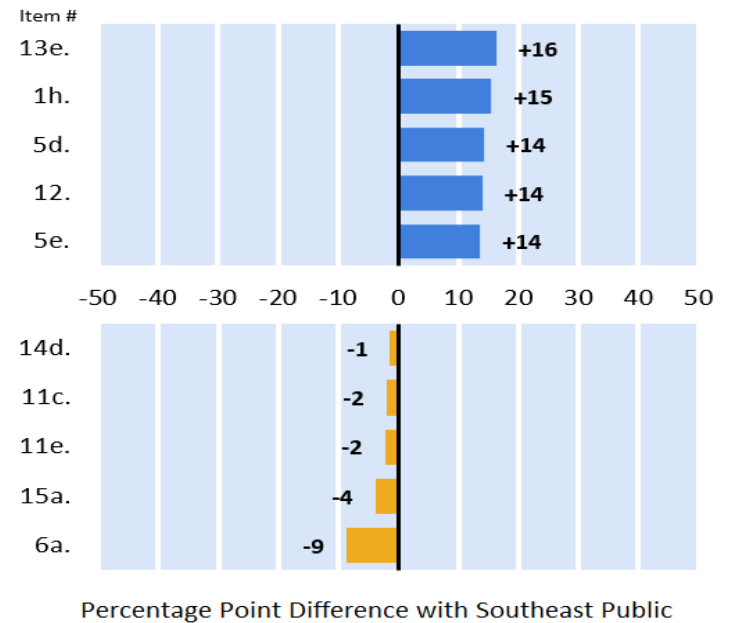
First-year

Highest Performing Relative to Southeast Public

- Quality of interactions with other administrative staff and offices
- Worked with other students on course projects or assignments
- Instructors provided feedback on a draft or work in progress
- About how many courses have included a community-based project (service-learning)?
- Instructors provided prompt and detailed feedback on tests or completed assignments

Lowest Performing Relative to Southeast Public

- Institution emphasis on encouraging contact among students from different backgrounds
- Participated in a learning community or some other formal program where
- Worked with a faculty member on a research project
- Spent more than 15 hours per week preparing for class
- Reached conclusions based on your own analysis of numerical information



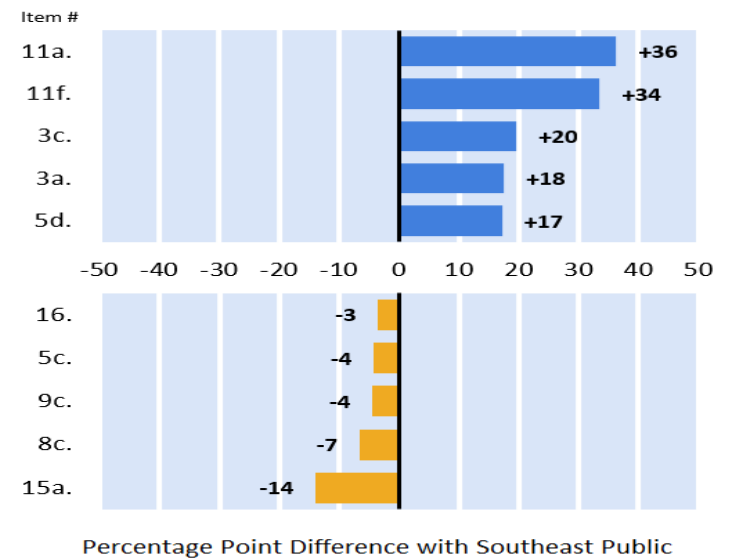
Senior

Highest Performing Relative to Southeast Public

- Participated in an internship, co-op, field exp., student teach., clinical placement
- Completed a culminating senior experience
- Discussed course topics, ideas, or concepts with a faculty member outside of class
- Talked about career plans with a faculty member
- Instructors provided feedback on a draft or work in progress

Lowest Performing Relative to Southeast Public

- Spent more than 10 hours per week on assigned reading
- Instructors used examples or illustrations to explain difficult points
- Summarized what you learned in class or from course materials
- Discussions with... People with religious beliefs other than your own
- Spent more than 15 hours per week preparing for class



23. 2017 NSSE Longwood's Highest and Lowest Performing Items relative to the Southeast Public Comparison Group:

First-year

Highest Performing Relative to Southeast Public

- Discussions with... People with political views other than your own
- About how many courses have included a community-based project (service-learning)?
- Prepared for exams by discussing or working through course material w/other students
- Asked another student to help you understand course material
- Spent more than 10 hours per week on assigned reading

Lowest Performing Relative to Southeast Public

- Spent more than 15 hours per week preparing for class
- Used numerical information to examine a real-world problem or issue
- Participated in a learning community or some other formal program where
- Reached conclusions based on your own analysis of numerical information
- Evaluated what others have concluded from numerical information

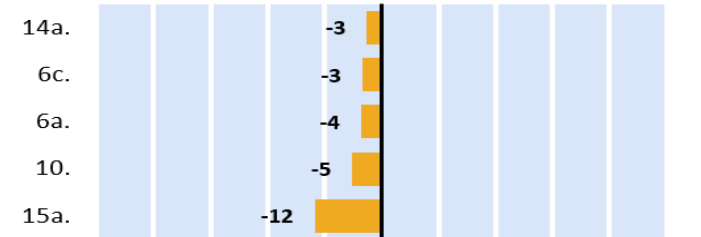
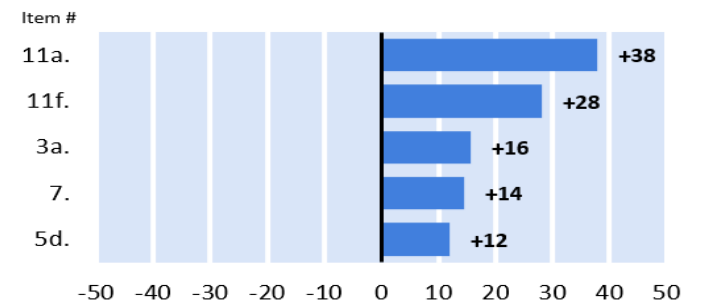
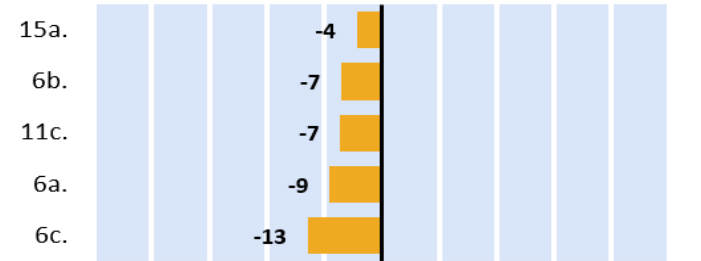
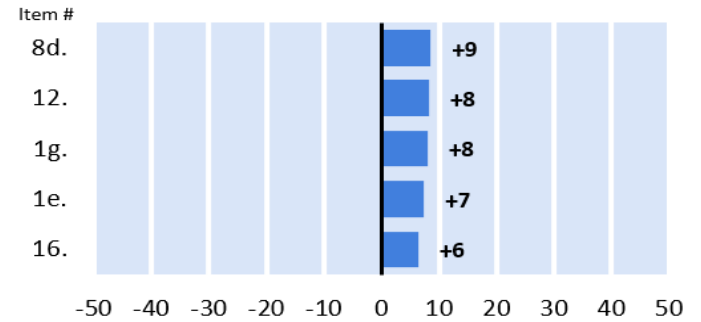
Senior

Highest Performing Relative to Southeast Public

- Participated in an internship, co-op, field exp., student teach., clinical placement
- Completed a culminating senior experience
- Talked about career plans with a faculty member
- Assigned more than 50 pages of writing
- Instructors provided feedback on a draft or work in progress

Lowest Performing Relative to Southeast Public

- Institution emphasis on studying and academic work
- Evaluated what others have concluded from numerical information
- Reached conclusions based on your own analysis of numerical information
- Extent to which courses challenged you to do your best work
- Spent more than 15 hours per week preparing for class



Percentage Point Difference with Southeast Public

24. 2014 NSSE Longwood's Highest and Lowest Performing Items relative to the Southeast Public Comparison Group:

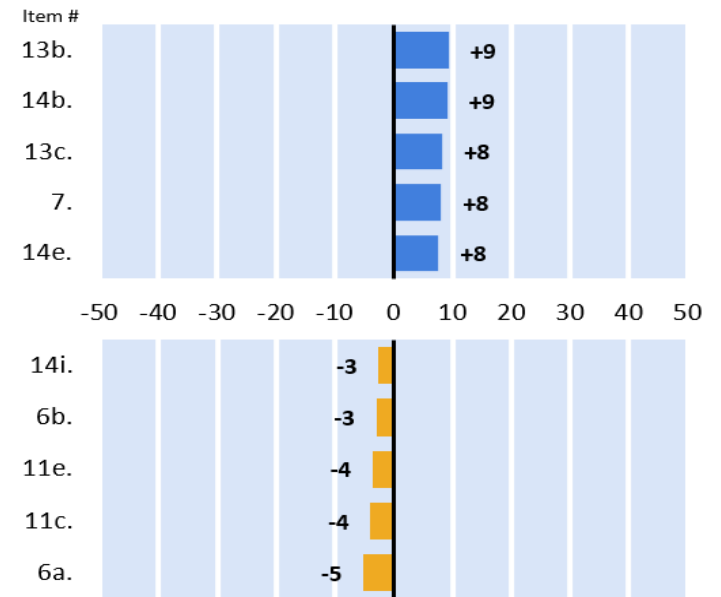
First-year

Highest Performing Relative to Southeast Public

- Quality of interactions with academic advisors
- Institution emphasis on providing support to help students succeed academically
- Quality of interactions with faculty
- Assigned more than 50 pages of writing
- Institution emphasis on providing opportunities to be involved socially

Lowest Performing Relative to Southeast Public

- Institution emphasis on attending events that address important social/econ./polit. Issues
- Used numerical information to examine a real-world problem or issue
- Worked with a faculty member on a research project
- Participated in a learning community or some other formal program where
- Reached conclusions based on your own analysis of numerical information



Percentage Point Difference with Southeast Public

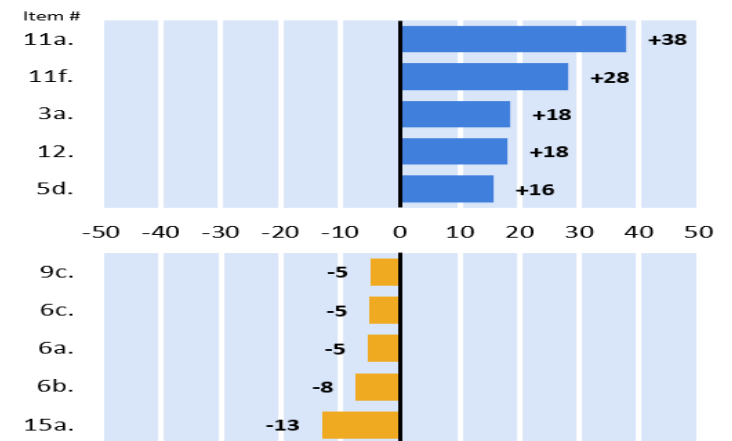
Senior

Highest Performing Relative to Southeast Public

- Participated in an internship, co-op, field exp., student teach., clinical placemt.
- Completed a culminating senior experience
- Talked about career plans with a faculty member
- About how many courses have included a community-based project
- Instructors provided feedback on a draft or work in progress

Lowest Performing Relative to Southeast Public

- Summarized what you learned in class or from course materials
- Evaluated what others have concluded from numerical information
- Reached conclusions based on your own analysis of numerical information
- Used numerical information to examine a real-world problem or issue
- Spent more than 15 hours per week preparing for class



Percentage Point Difference with Southeast Public